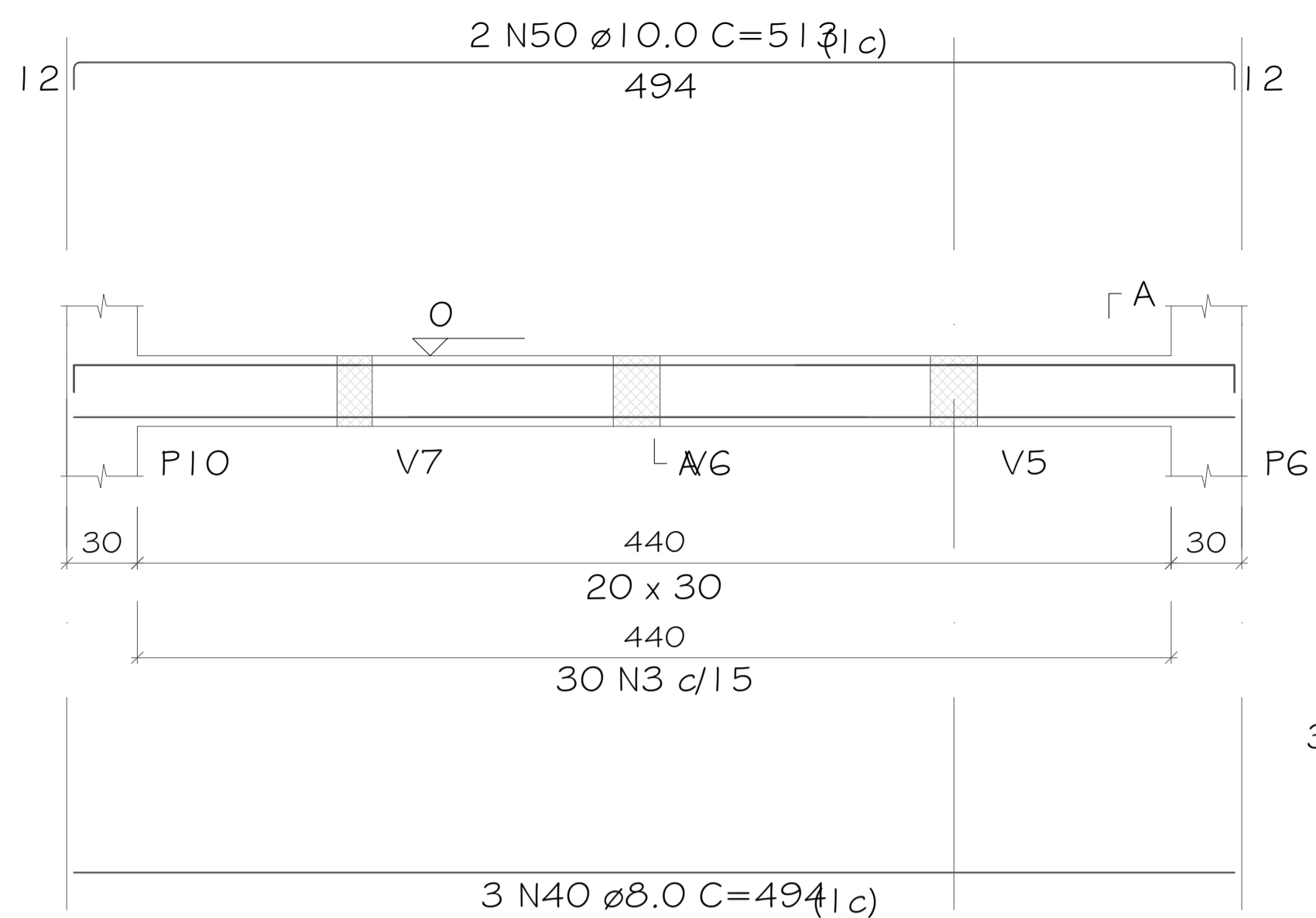
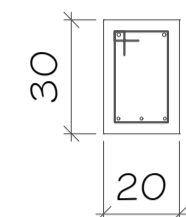


V15
ESC 1:25

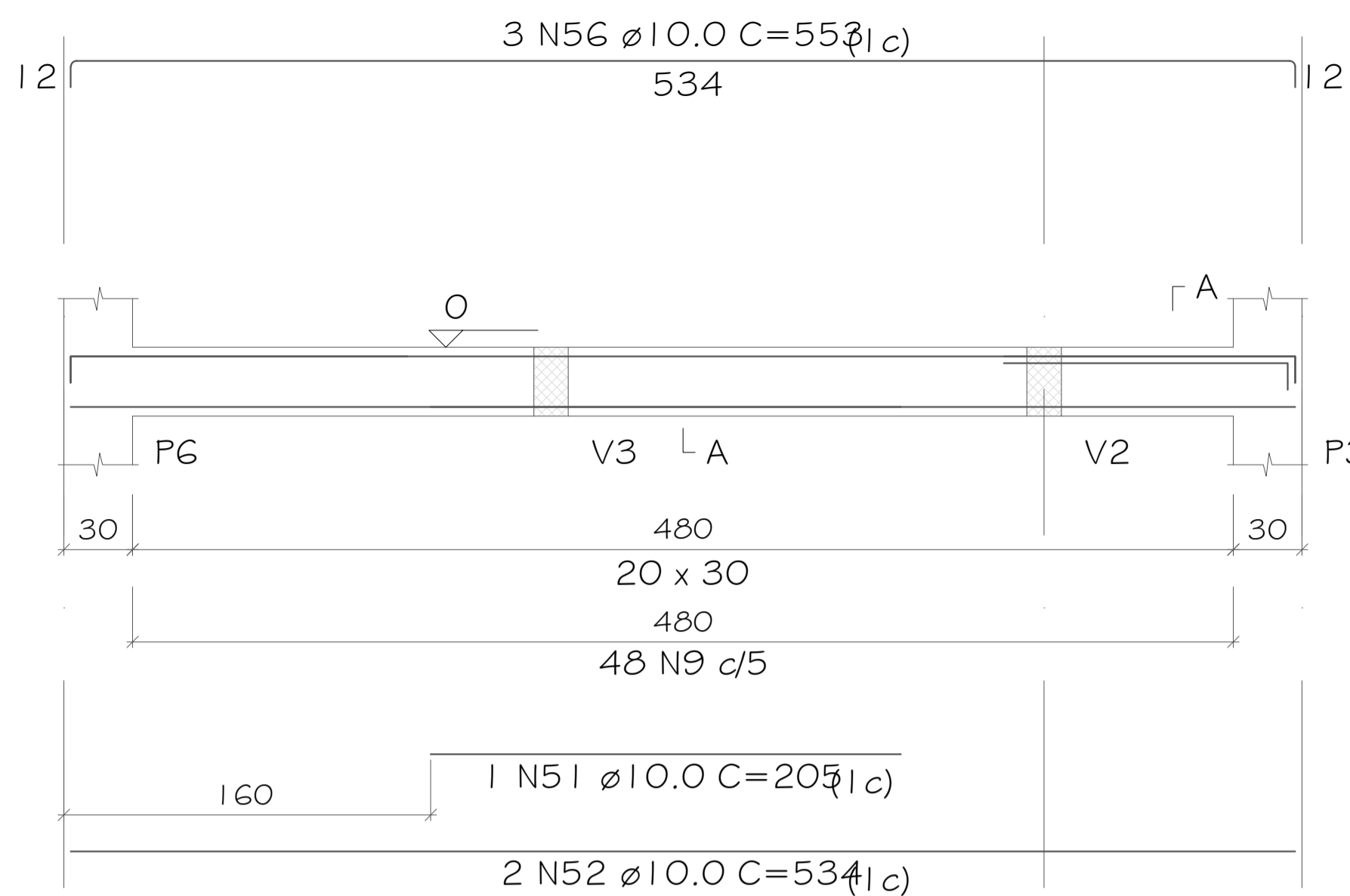


SEÇÃO A-A
ESC 1:20

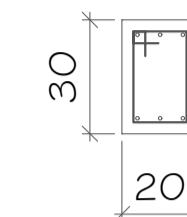


30 N3 ϕ 5.0 C=87

V16
ESC 1:25

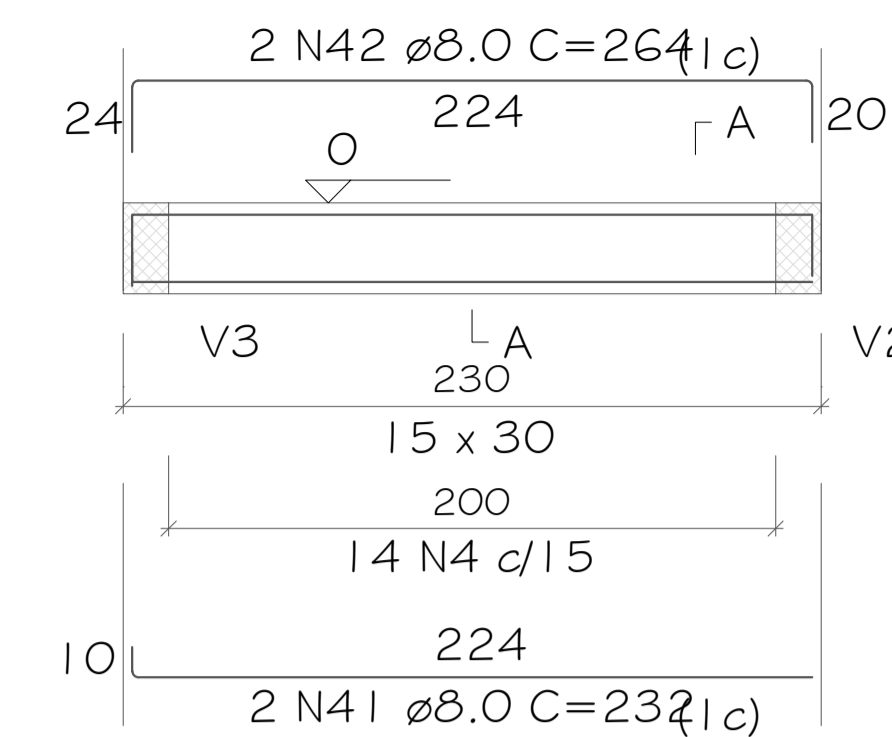


SEÇÃO A-A
ESC 1:20

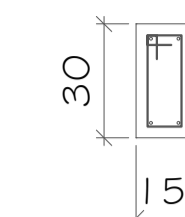


48 N9 ϕ 5.0 C=88

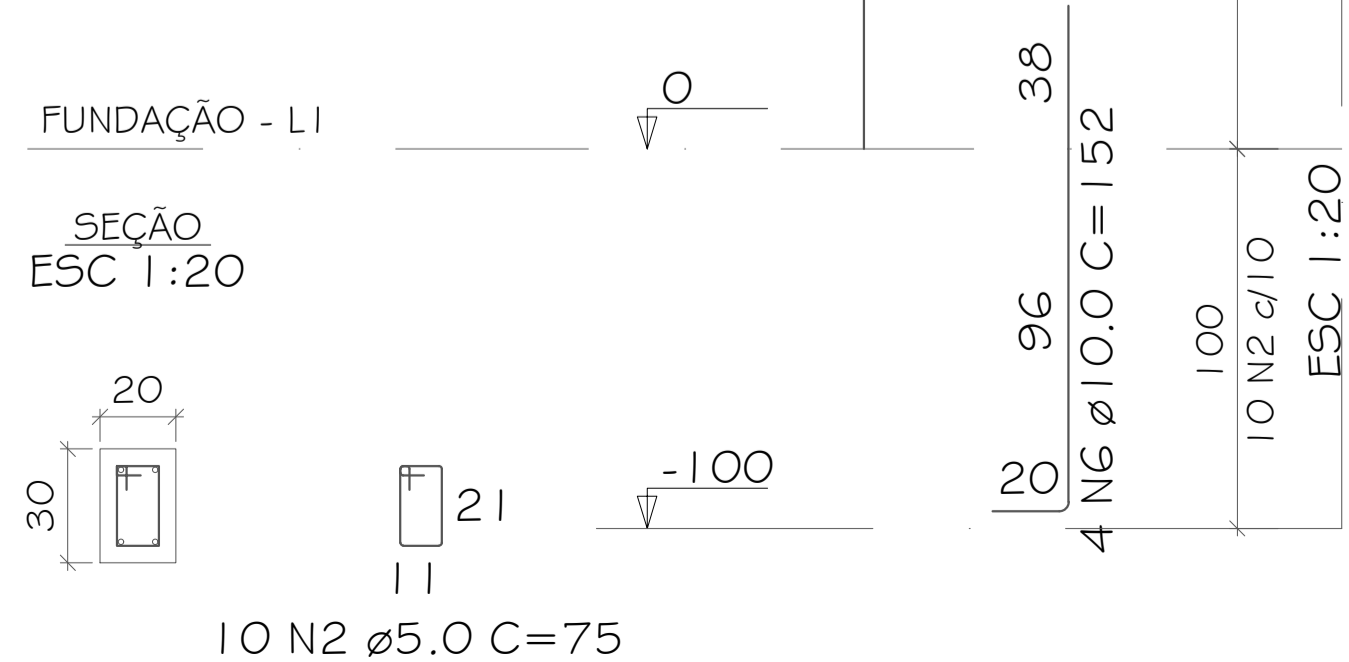
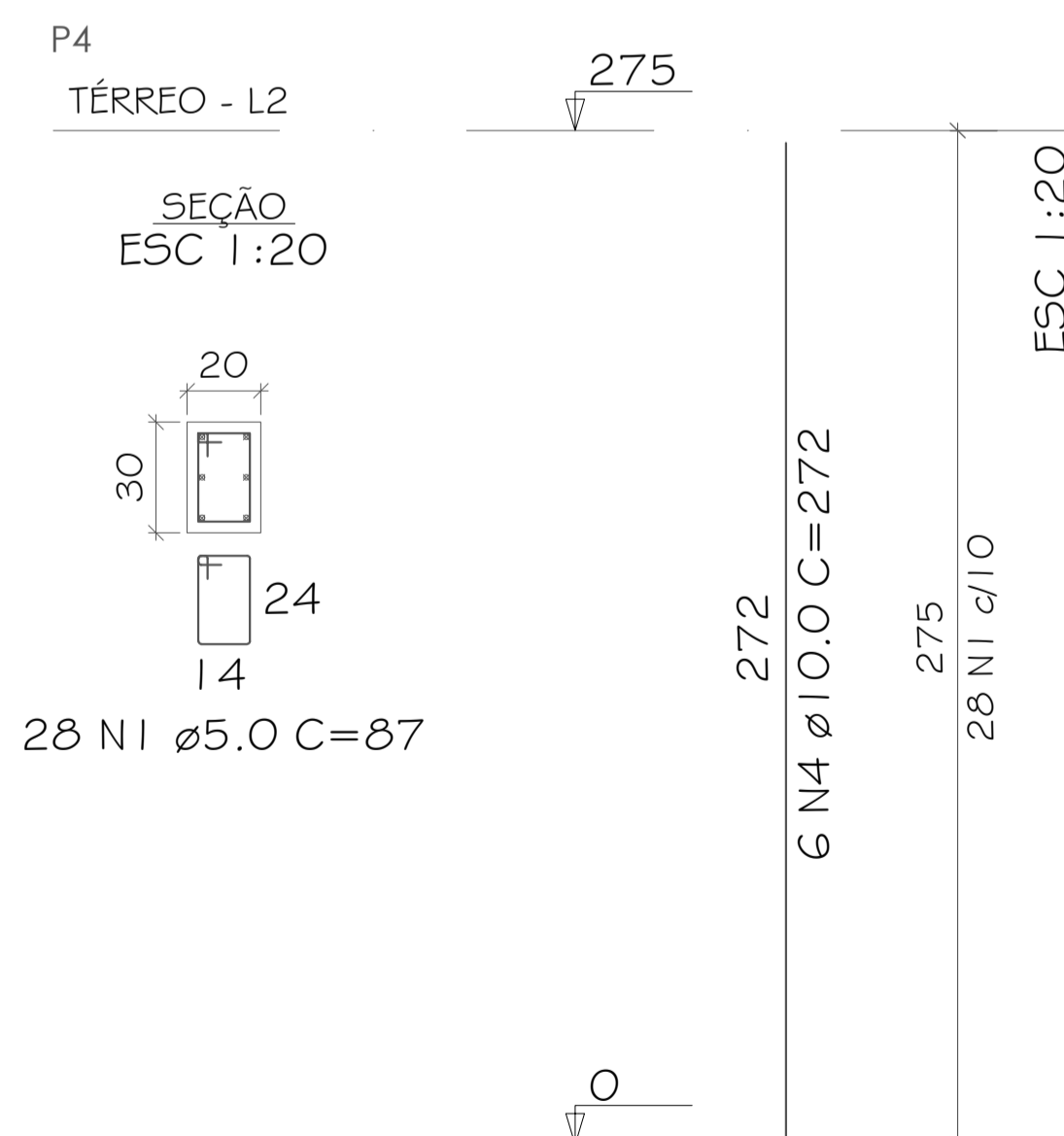
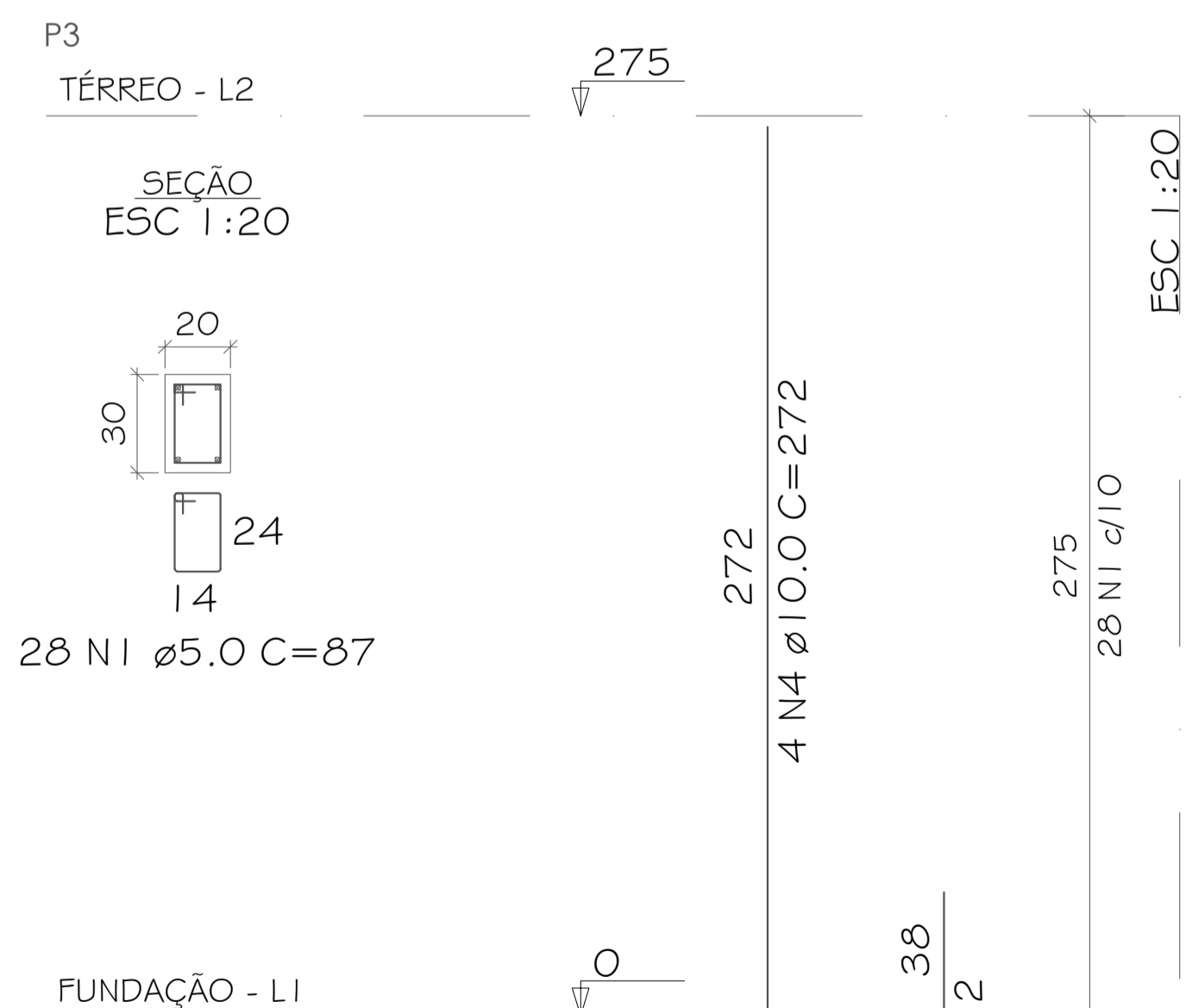
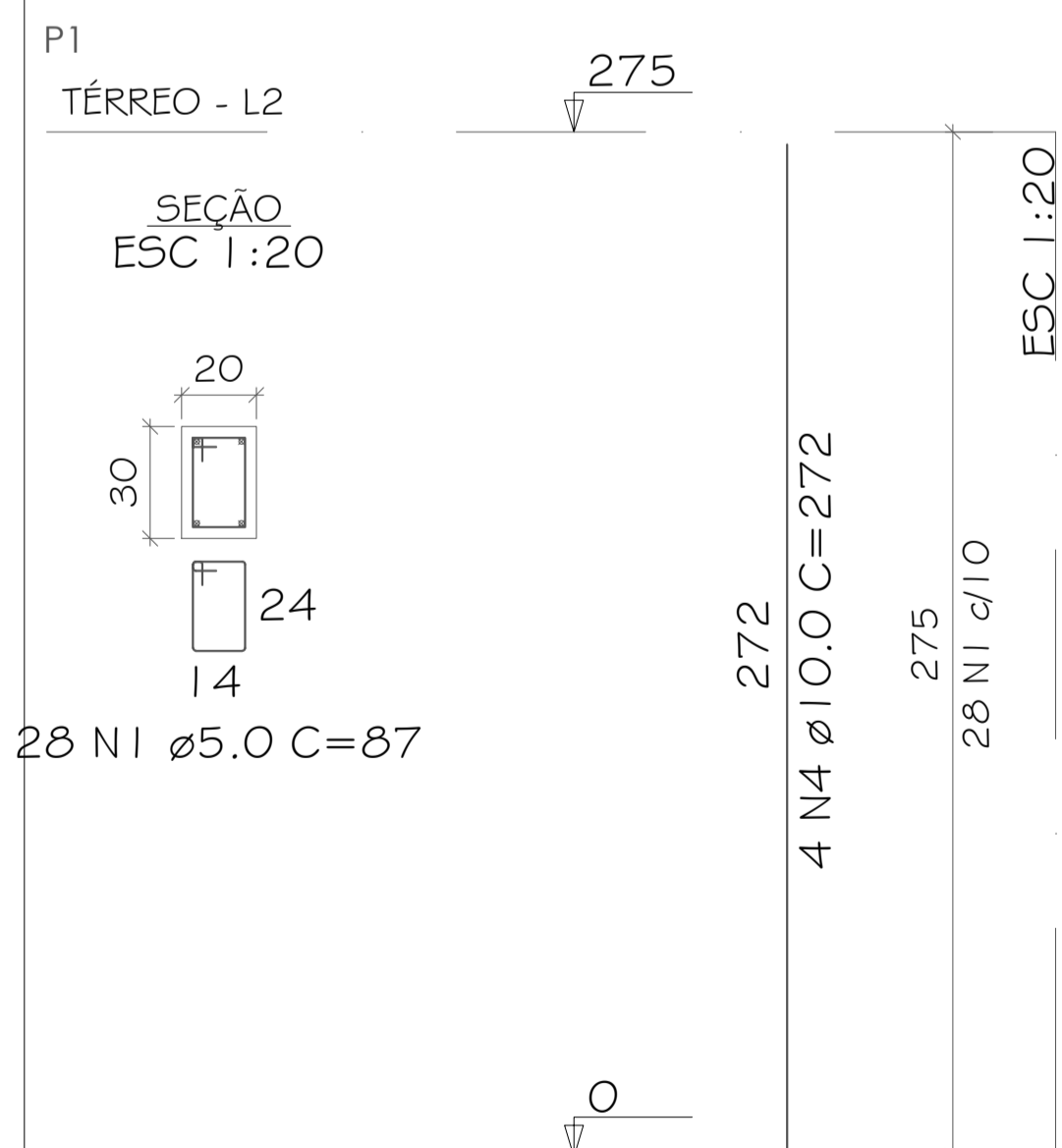
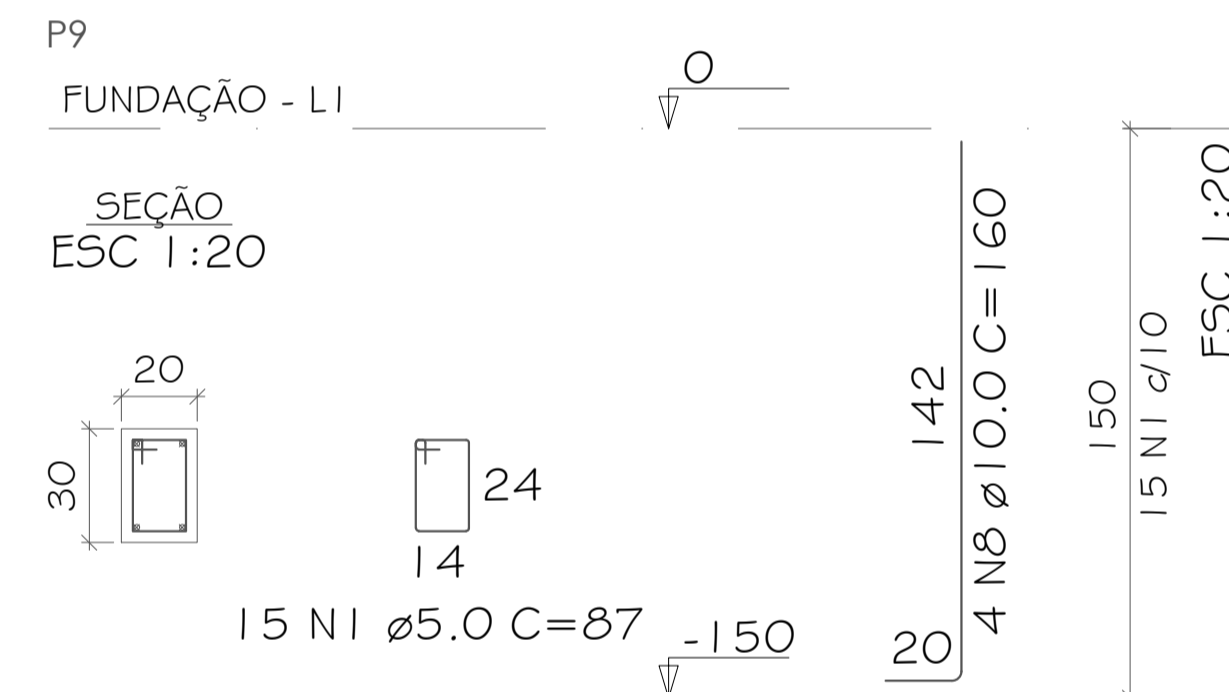
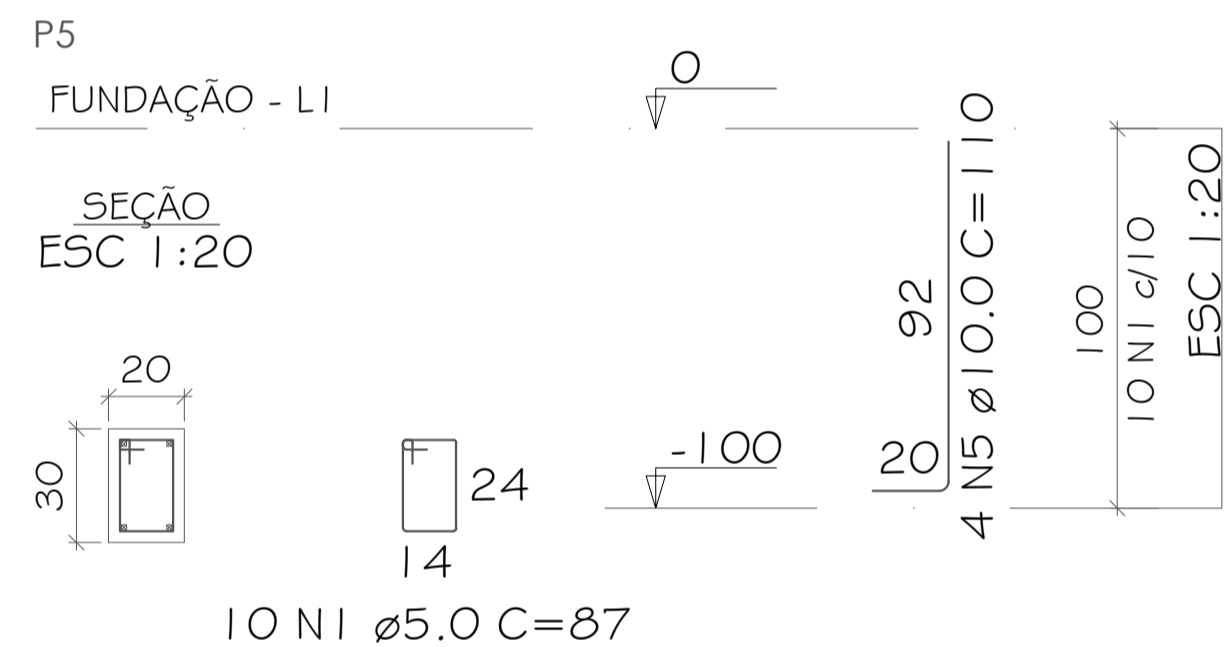
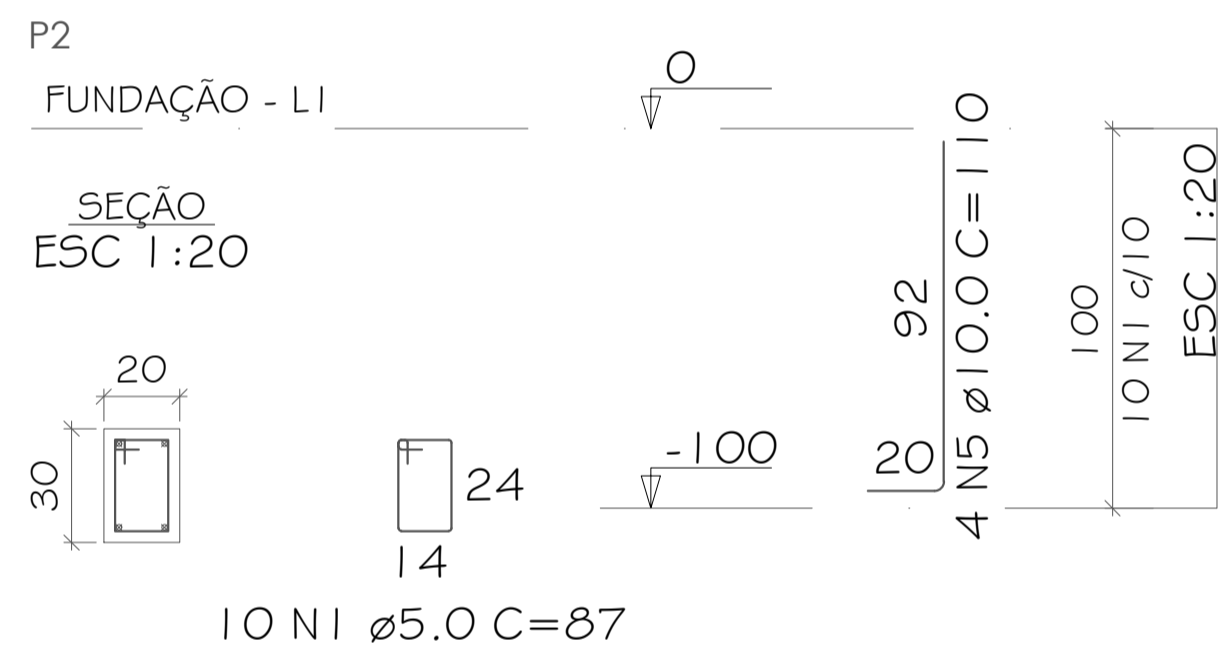
V17
ESC 1:25



SEÇÃO A-A
ESC 1:20



14 N4 ϕ 5.0 C=77



PROJETO
REFORMA E AMPLIAÇÃO PAVILHÃO L. CUTIA

LOCAL
Interior - Linha Cutia, Novo Xingu/RS - CEP: 99687-000

RESPONSÁVEL TÉCNICO
Tays Lucia Remoniti
CREA/RS 247973

PROPRIETÁRIO
Prefeitura Municipal de Novo Xingu
04.207.526/0001-06

CONTEÚDO
Pilar

PROJETO
Estrutural

ÁREA
62,33m²

DATA
18/06/2024

FRANCHA
08/11

DIREITOS AUTORAIS RESERVADOS. LEI 9.610/98